

Wilhelmstr. 19  
72074 Tübingen  
post@thomas-zastrow.de  
www.thomas-zastrow.de  
01624228029

# Yet Another eXist Client - The Manual

*Thomas Zastrow*

*University Tübingen*

## Table of content

1. Introduction.....	3
2. Getting YAEC.....	3
2.1. Binary Distribution.....	3
2.2. Source Code.....	4
3. Getting Started.....	4
4. Backup and Restore.....	6
5. Query Input.....	6
6. NodeSelector.....	7
7. About This Document.....	8

# Yet Another eXist Client - The Manual

*Thomas Zastrow*

## 1. Introduction

The name is program: Yet Another eXist Client (YAEC) is not a replacement for the very well done client which comes along as part of the eXist distribution. Instead, it is kind of playground for me to implement some ideas I have regarding the use of eXist. So, see it as something like a „proof of concept“ and not as a ready-for-production-use application.

As a cite from the source code:

```
This program is distributed in the hope that it will be useful,  
but WITHOUT ANY WARRANTY; without even the implied warranty of  
MERCHANTABILITY or FITNESS FOR A PARTICULAR PURPOSE. See the GNU  
Lesser General Public License for more details.
```

Of course, I'm interested in feedback, critics, bugreports and helping hands in development.

## 2. Getting YAEC

YAEC is developed in Java 1.6 under Linux, but it should run also on other platforms like Windows where a Java Virtual Machine (JVM) is available. Even if I didn't tried it out, but it should be possible to compile YAEC also with Java 1.5.

### 2.1. Binary Distribution

Feel free to download the binary distribution<sup>1</sup> from

[http://www.thomas-zastrow.de/readarticle.php?article\\_id=49](http://www.thomas-zastrow.de/readarticle.php?article_id=49)

Unzip the zip file, go to the new created directory „dist“ and start YAEC from there:

```
java -jar YAEC.jar
```

<sup>1</sup> Additionally to the core program, the binary distribution contains all necessary libraries in the directory „lib“, so it should run directly out-of-the-box

## 2.2. Source Code

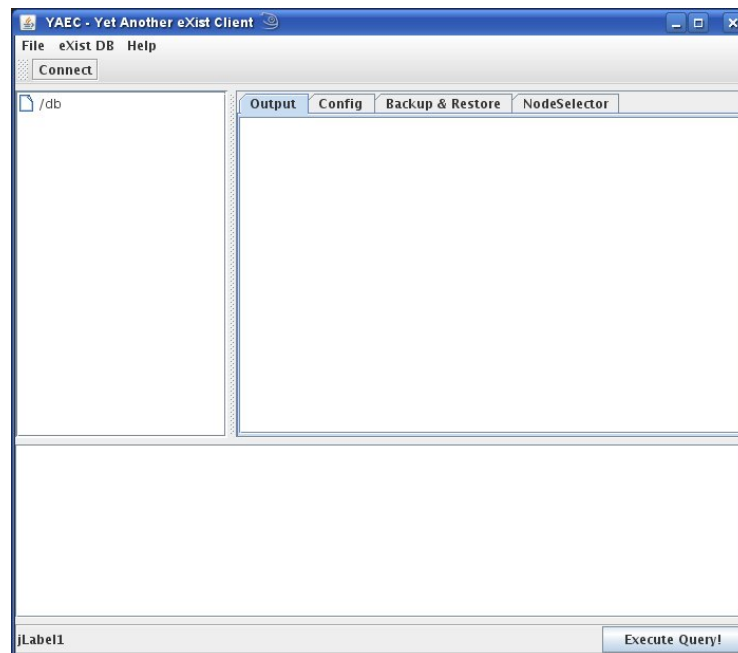
If you are interested in helping me with the development or want to take a look at my perfect programming code, check out YAEC's Subversion repository at Sourceforge:

```
svn co https://exist.svn.sourceforge.net/svnroot/exist/trunk/YAEC  
YAEC
```

YAEC is developed as a Netbeans project, so the simplest way of browsing through the code, developing, compiling etc. should be to open the project's file in Netbeans. But Netbeans is not absolutely necessary for working with the code.

## 3. Getting Started

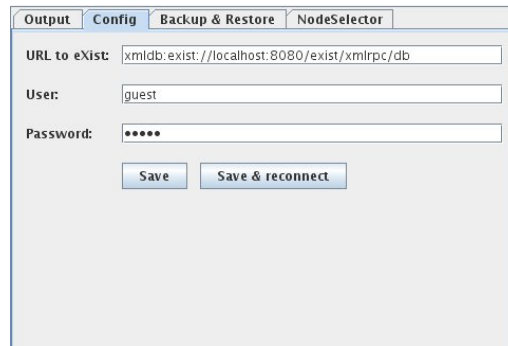
Before starting YAEC, make sure that eXist is running: even on your local machine or on another machine in your network. eXist needs to run in network modus: starting it with the provided „startup“ scripts in the bin-directory of the eXist distribution should do the job. After starting YAEC, you see something like this<sup>2</sup>:



*YAEC after start*

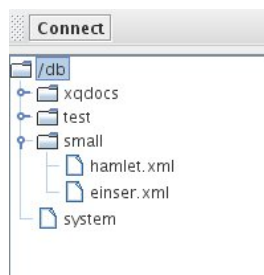
<sup>2</sup> The development of YAEC is going on, so the actual look can differ a little bit from the screenshots in this manual

On the right hand side of YAEC, you see some tabs. These tabs are providing the main functionality. Go to the tab „Config“ and edit the values here so that they are matching your eXist installation<sup>3</sup>:



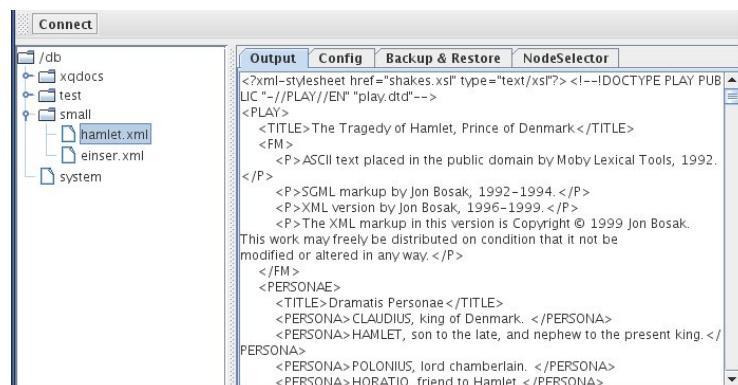
*The Configuration Tab*

After setting the correct configuration, press „Connect“ in the upper right hand side of the toolbar. If everything went well, YAEC connects to the eXist database and loads its content into the treeview on the left hand side:



*The Treeview*

Similar to a filebrowser in modern operating systems, you see here the content of eXist in a hierarchical way. You can browse through the collections, and doubleclicking on an XML resource loads this resource into the „Output“ window on the right side:

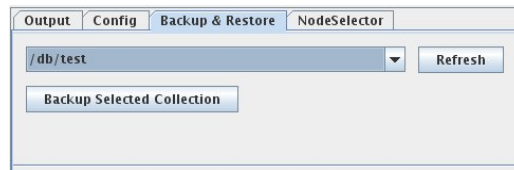


*The Output Tab*

<sup>3</sup> In the standard configuration, the user „guest“ with password „guest“ on a local installation of eXist on port 8080 is set

## 4. Backup and Restore

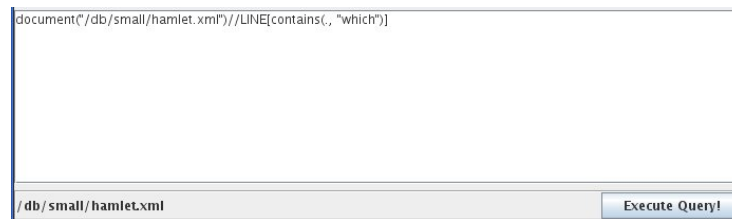
At the moment, only a backup functionality is implemented. Go to the „Backup and Restore“ tab. First, press „Refresh“ to load the available collections into the select box. Then, select the collection you want to backup („/db“ selects the whole database) and press „Backup selected collection“. In the following dialog, select a filename with the extension „zip“ and the selected collection will be backed up into that ZIP file.



*The Backup Tab*

## 5. Query Input

On the bottom of YAEC, you see a big text input area. Here, you can type in any Xpath-statement or Xquery-program and execute it via the button „Execute Query!“:

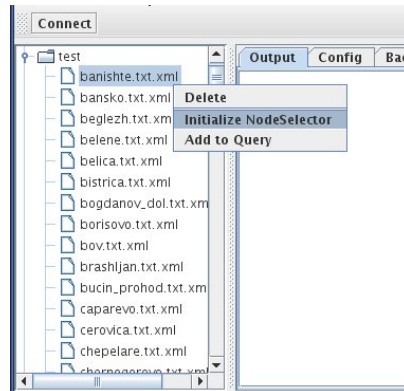


*The Query Input*

The result of the query will be displayed in the „Output“ window.

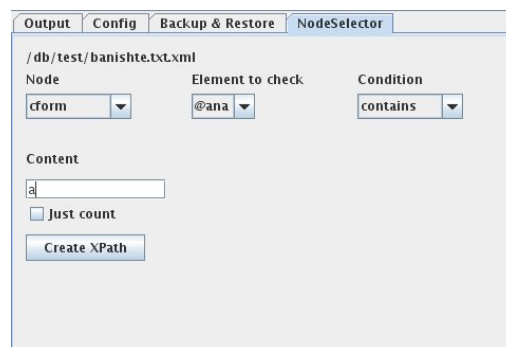
## 6. NodeSelector

The NodeSelector is a first try, to give people a graphical tool for creating Xpath statements at their hand. Please note: Its a first try, so don't compare it with other mature tools! To use the NodeSelector, you have first to initialize it. In the treeview on the left side, navigate to an XML document and with a right click on it, select „Initalize NodeSelector“:



*Initializing the NodeSelector*

Now, switch to the tab „NodeSelector“. There are three select boxes. On the first („Node“), all XML nodes from the selected document are chooseable. Choose a node, and the second select box („Element to check“) shows up all attributes and some more properties of the node which is selected in the first select box. Select one. In the third select box („Condition“), you can choose between some predefined conditions for the element of the second select box. Last not least, in the „Content“ text box, you can specify the content to match. Clicking on „Create Xpath“ creates now an Xpath statements in the query input which matches the selected nodes. As mentioned above, a click on „Execute query!“ executes the query.



*The NodeSelector*

Summary. The screenshot above shows a NodeSelector which is initialized with the document „/db/test/banishte.txt.xml“. This document contains one or more nodes „cform“. This one is selected in the first select box. The second select box automatically contains noa all the available nodes ob „cform“ and some more constructs. Here, the attribute „ana“

is selected. The condition „contains“ in the third select box defines that all nodes „cform“ are selected where the attribute „ana“ contains the text in the „Content“ field – here: „a“. So: „From the document „/db/test/banishte.txt.xml“, select all nodes with an attribute „ana“ where „ana“ contains an „a“. The resulting Xpath statement looks like this:

```
document ( "/db/test/banishte.txt.xml " ) //cform[contains(@ana, "a" ) ]
```

## 7. About This Document

This document was created with the help of the "st scripts". These are a collection of XSL scripts which can be used to create documents in a TeX (or LateX) style. They make use of the "XSL Formatting Objects" (XSL-FO) and are working perfectly together with the Apache FOP.

I'm not longer developing the "st Scripts", but if you are interested in them, take a look:

<http://www.thomas-zastrow.de/st/>

The source code of this document is XML, you can download it also from the YAEC homepage.